

WINDOWS 7 DRIVERS INSTALLATION GUIDE

This document outlines the steps to install Windows 7 drivers for ZTE USB data cards.

[IF YOUR CONNECTION MANAGER IS ALREADY LOADED GO TO STEP 4](#)

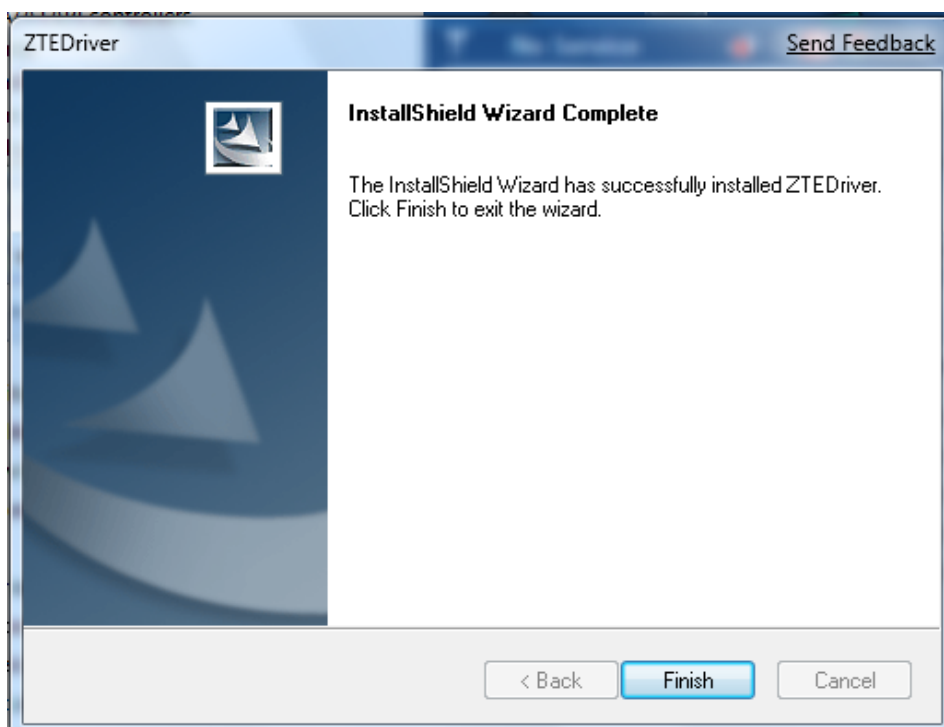
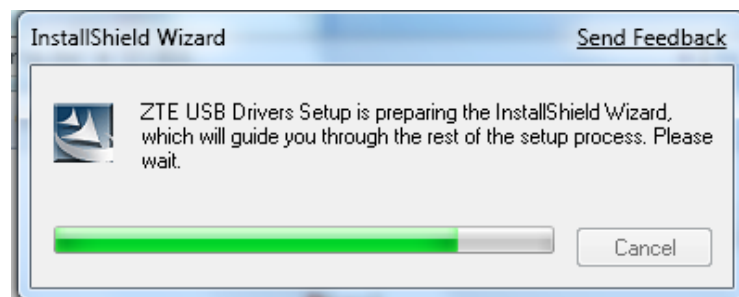
Step 1: Plug the USB data card into your PC. The installation starts automatically.

Step 2: Complete the Connection Manager installation wizard.

Step 3: After installation, Connection Manager will launch automatically, Windows will search and load drivers. Due to the lack of Windows 7 drivers, Windows 7 will not be able to load the drivers successfully.

Step 4: From the downloaded files double click 'ZTEDrvSetup.exe' to start the Windows 7 drivers installation.

Step 5: After starting the installation wizard you will see the two pop-up windows shown below (See figure 1 and figure 2). When you see figure 2 the new drivers are installed and Windows 7 will complete the installation.



Step 6: Now Windows 7 will start to load the drivers. Once all of the drivers are loaded successfully the Connection Manager will switch to ready status and you will be able to Connect and use your modem normally.